

ABBREVIATIONS:

- CB = CURVE'S CHORD BEARING
- CL = CURVE'S CHORD LENGTH
- CONC. = CONCRETE
- D = CURVE'S DELTA ANGLE
- FND. = FOUND
- FPL = FLORIDA POWER & LIGHT CO.
- L = CURVE'S ARC LENGTH
- MON. = MONUMENT
- O.R.B. = OFFICIAL RECORD BOOK
- P.B. = PLAT BOOK
- P.O.B. = POINT OF BEGINNING
- PCP = PERMANENT CONTROL POINT
- PG. = PAGE
- PGS. = PAGES
- PRM = PERMANENT REFERENCE MONUMENT
- R = CURVE'S RADIUS
- R/W = RIGHT OF WAY
- W/ = WITH

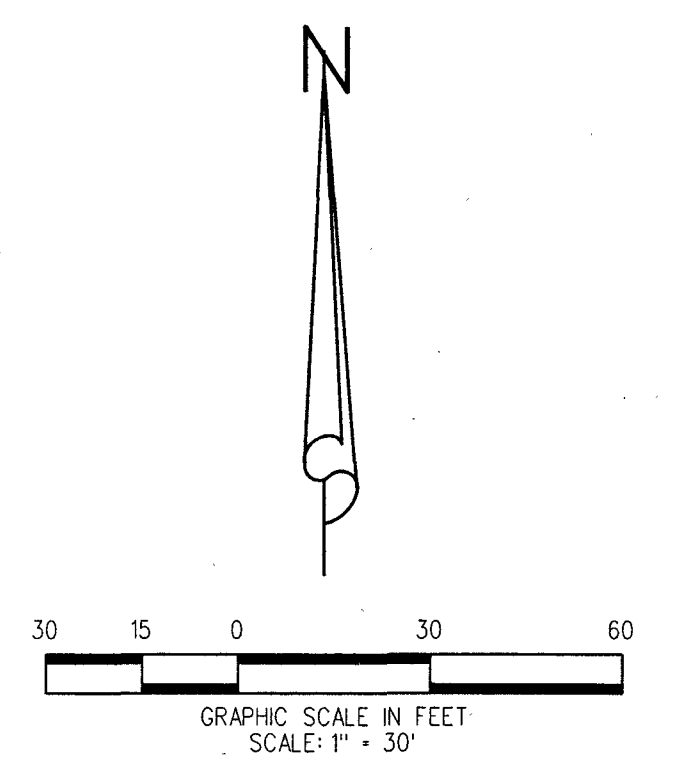
LEGEND:

- ⊙ = DENOTES SET PERMANENT CONTROL POINT (PCP) SET MAG NAIL & DISK "PCP LB4431"
- ⊙ = DENOTES SET PERMANENT REFERENCE MONUMENT (PRM) SET 5/8" IRON ROD & ALUMINUM CAP "PRM LB 4431"
- ⊕ = DENOTES CHANGE IN DIRECTION

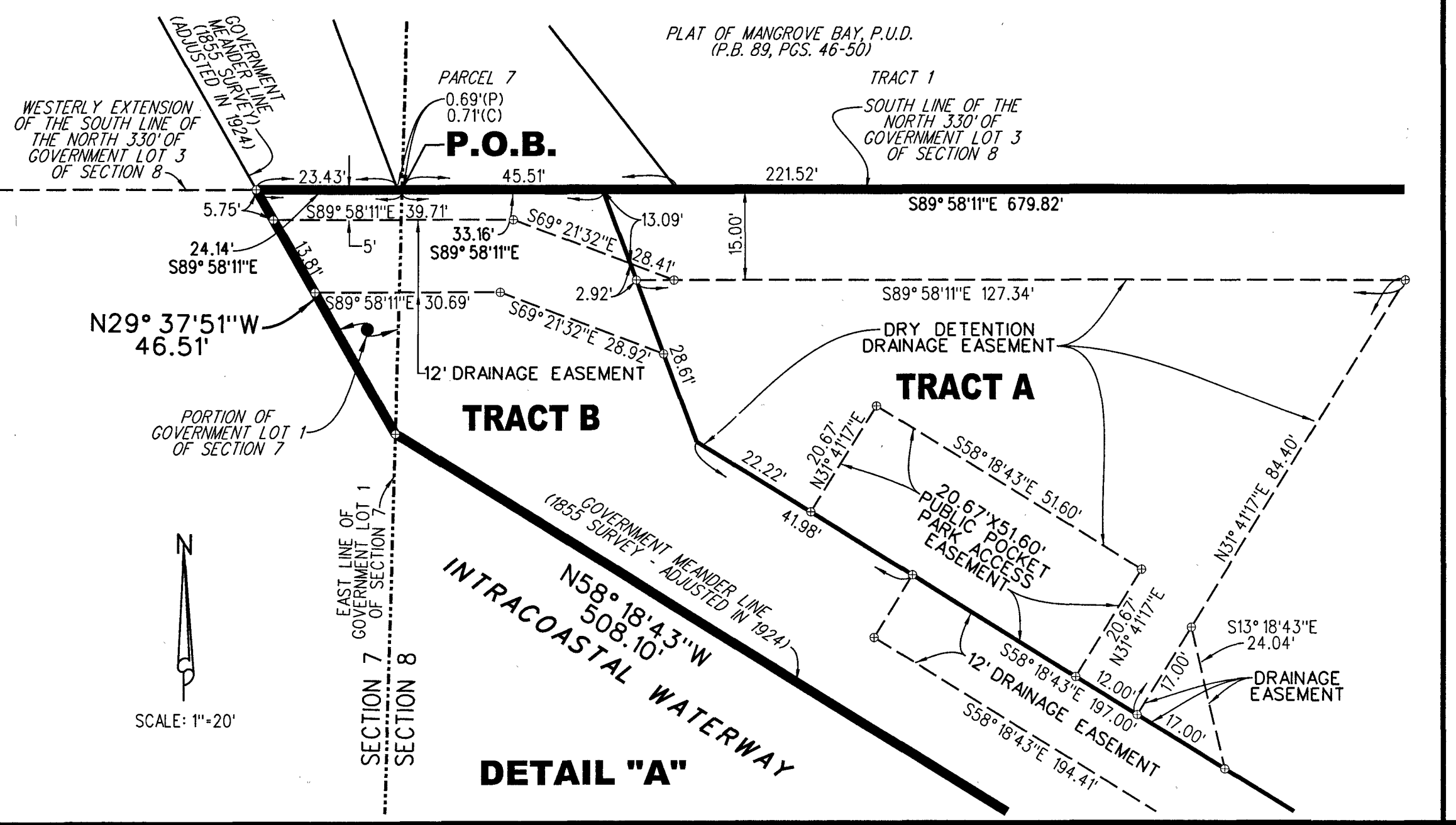
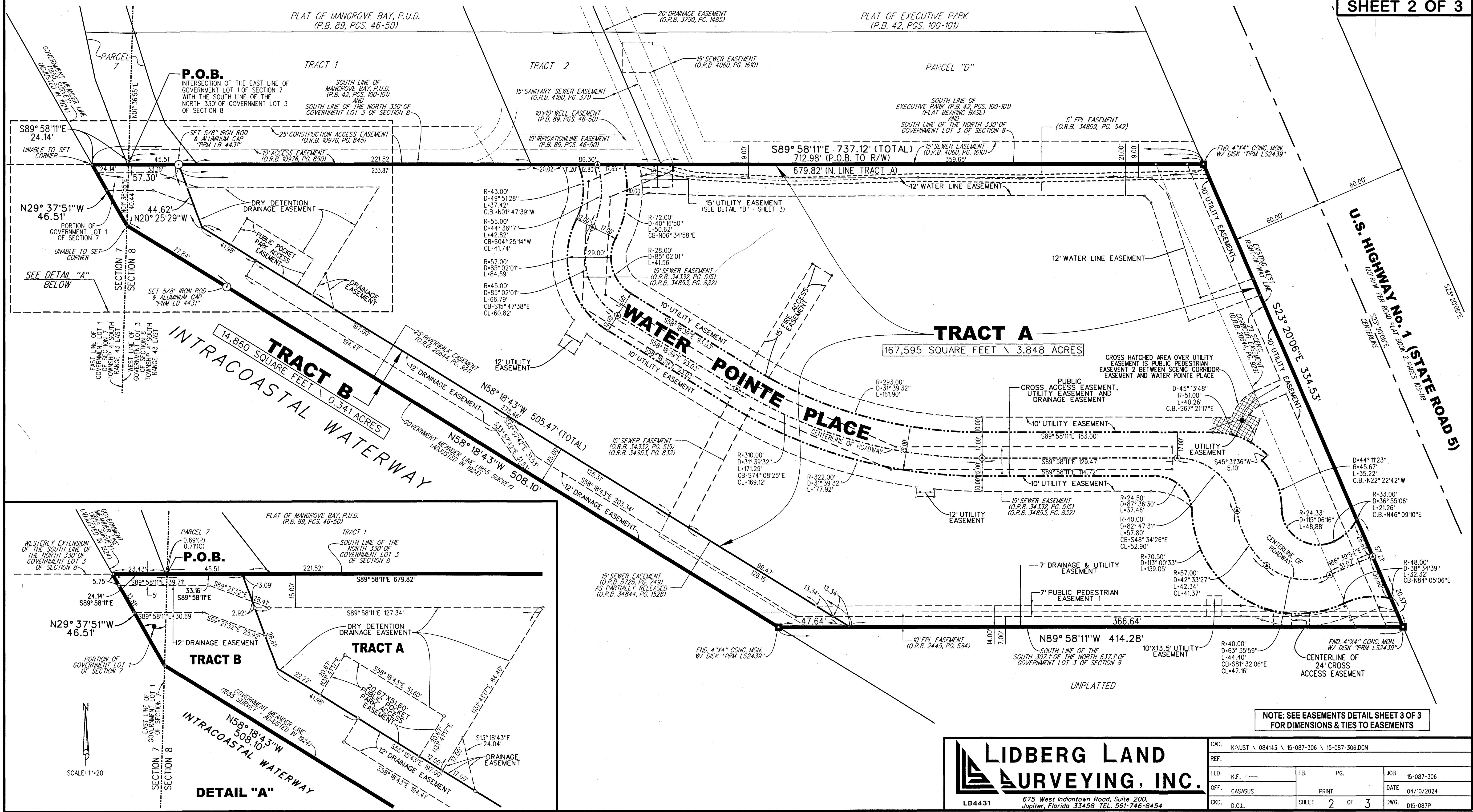
WATER POINTE

**BEING A PORTION OF GOVERNMENT LOT 1,
SECTION 7, TOWNSHIP 41 SOUTH, RANGE 43 EAST AND
A PORTION GOVERNMENT LOT 3,
SECTION 8, TOWNSHIP 41 SOUTH, RANGE 43 EAST
TOWN OF JUPITER, PALM BEACH COUNTY, FLORIDA**

APRIL 2024



SHEET 2 OF 3



NOTE: SEE EASEMENTS DETAIL SHEET 3 OF 3 FOR DIMENSIONS & TIES TO EASEMENTS

LIDBERG LAND SURVEYING, INC.

675 West Indiantown Road, Suite 200,
Jupiter, Florida 33458 TEL. 561-746-8454

| | | | |
|--|--|-----------------|------------------|
| CAD: K:\JUST \084143 \15-087-306 \15-087-306.DGN | | JOB: 15-087-306 | |
| REF: | | FB: PG. | DATE: 04/10/2024 |
| FLD: K.F. | | PRINT | DWG: D15-087P |
| OFF: CASASUS | | SHEET 2 OF 3 | |
| CRD: D.C.L. | | | |